



Recommended Spare Parts

About Motion Control Engineering, Inc.	1
Placing an Order	1
Price Information	1
Parts Lists	2
AC Traction	
iControl AC	4
iControl AC PC Boards and Components	4
Motion 4000	6
Motion 4000 PC Boards and Components	6
IntellaNet AC	7
IntellaNet AC Boards and Components	7
Tricon AC	8
Tricon AC Boards and Components	8
IMC-AC (Intelligent Motion Control)	9
IMC-AC PC Boards	9
IMC-AC Components	9
VFMC-1000	10
VFMC-1000 PC Boards	10
VFMC-1000 Components	10
VFMC-1000-PTC (PTC-AC)	11
VFMC-1000-PTC PC Boards	11
VFMC-1000-PTC Components	11

Recommended Spare Parts Lists

DC Traction — SCR

iControl DC	12
iControl DC PC Boards and Components	12
IMC-SCR	14
IMC-SCR PC Boards	14
IMC-SCR Components	14
IMC Performa	15
IMC Performa PC Boards	15
IMC Performa Components	15
VVMC-1000-SCR	16
VVMC-1000-SCR Components	16
VVMC-1000-PTC-SCR (PTC-SCR)	17
VVMC-1000-PTC-SCR PC Boards	17
VVMC-1000-PTC-SCR Components	17

Hydraulic

Motion 2000	19
Motion 2000 Circuit Boards	19
HMC-1000-PHC (Field Programmable)	20
HMC-1000-PHC PC Boards	20
HMC-1000-PHC Components	20
HMC-1000-HS (Factory Programmable)	21
HMC-1000 PC Boards	21
HMC-1000 Components	21

Motor/Generator

IMC-MG	23
IMC-MG PC Boards	23
IMC-MG Components	23
VVMC-1000 (Motor/Generator)	24
VVMC-1000 Motor/Generator PC Boards	24
VVMC-1000 Motor/Generator Components	24
VVMC-1000-PTC (PTC-MG)	25
VVMC-1000-PTC PC Boards	25
VVMC-1000-PTC Components	25

Motion 3000ES Escalator Controller

Motion 3000 Escalator Control Boards	26
--------------------------------------	----

SCR Drives

MCE System 12 SCR Drive	28
System 12 Drive Components	28

Group Controllers

iCentral	29
iCentral PC Boards and Components	29
mGroup	30
mGroup PC Boards and Components	30
IntellaNet Group	30
IntellaNet Group PC Boards and Components	30
M3 or AIM Group System	31
M3 or AIM PC Boards	31

Door Operators

Complete Door Operators	32
SmarTraq	33
Model 4150-B1	34
Model 4150-B3	34
Model 4151-B1	35
Model 4151-F	35
Model 4152-B2	36
Model 4157-F	36

Landing Systems

iLand / iLand C	37
iLand PC Boards and Components	37
iLand Slide Guide	38
iLand Slide Guide Landing System Components	38
Motion ELGO Landing System	39
Motion Control ELGO Components	39
SET-9000	40
SET-9000 Components	40
LS-QUAD-2 and LS-QUIK	41
LS-QUAD-2 Components	41
LS-QUIK-1 Components	41
LS-STAN and LS-QUTE	42
LS-STAN (LS-STAN5) (LS-STAN7)	42
LS-QUTE	42

Power Loss Mitigation

TAPS (Traction Auxiliary Power Supply)	43
TAPS	43
Video Assisted Rescue System	44
Video Assisted Rescue System	44

Recommended Spare Parts Lists

Traveling and Hoistway Cables

iControl	45
Tricon	45
Hardware	45

Integration and Networking

Line Drivers, Adapters, Hubs, Modems	51
CMS	51
MSD	51
Alphabetical Parts List	52



Spares and Replacement Parts

About Motion Control Engineering, Inc.

Motion Control Engineering (MCE) is the largest non-proprietary manufacturer of elevator equipment in the United States. MCE continues to expand its product line, providing customers the most effective initial order, engineering, manufacturing, delivery, and technical support available —

- AC, DC, Hydraulic, and Motor/Generator Controls
- Escalator Controls
- SCR Drives
- Dispatching Controls
- Door Operators
- Power Loss Mitigation Systems
- Landing Systems
- Traveling and Hoistway Cables
- Integration and networking

Placing an Order

You may place an order by phone, fax, email, or web:

- Phone: 800 444-7442, then press 321 or follow verbal instructions
- Fax: 916 858-4212
- Email: parts@mceinc.com
- Web: www.mceinc.com/parts

IntellaNet or Tricon
Call 718 417 3131

Please have your MCE Job# (or name) and credit card or purchase order information ready.

Price Information

Please call for pricing: 800 444-7442. Press 321. There is an alphabetically arranged [table](#) at the back of this booklet to help you locate part numbers and descriptions.

Parts Lists

The parts lists in this guide are not complete Bills of Material. They are lists of selected components.

- Prices are subject to change without prior notice.
- CI/O and PI/O Boards have different configurations depending on voltage and type of lanterns and gongs.
- Semiconductor fuses have various sizes and prices.
- Swing panels are software version and job specific.
- Starters and Variable Frequency Drives are not included because of the multitude of sizes available.
- Dynamic braking unit size and cost depend upon drive specifications.
- Relay boards are job specific.
- Product photos may show non-standard cabinets.
- Actual board positions may vary from layout shown.

AC Traction

AC traction controls in this section include:

- [iControl AC](#)
- [Motion 4000](#)
- [IntellaNet AC](#)
- [Tricon AC](#)
- [IMC-AC](#)
- [VFMC-1000](#)
- [VFMC-1000-PTC \(PTC-AC\)](#)

For DC-SCR controls, please refer to [“DC Traction — SCR” on page 12](#).

For Hydraulic controls, please refer to [“Hydraulic” on page 18](#).

For motor/generator controls, please refer to [“Motor/Generator” on page 22](#).

For escalator controls, please refer to [“Motion 3000ES Escalator Controller” on page 26](#).

Spares and Replacement Parts

iControl AC

iControl AC PC Boards and Components

Part #	Description
C-COMM-9P-F-HCDA	Serial hall call, ribbon to 9-pin D cable
ICE-FLASH-32MB	Flash card, 32MB
ICE-SRAM-2MB	Static RAM, 2MB
i-BOX-1	iBox Main processing system
i-BOX-1-MI	iBox, No DL Bypass
ICE-COP	Serial Car Operating Panel board
ICE-COP-X	Serial Car Operating Panel Expansion board
ICE-CTP	Cartop processor board (iLink)
ICE-EB	Emergency brake board
ICE-IEQ	Earthquake board
ICE-IRB	Relay Board
ICE-IRD	Rear door board
ICE-MIAC	Input board
ICE-MOR	Output board
ICE-RG	Rope gripper board
ICE-SAF	Safety Processor board
ICE-SF-CE	Serial fixture board, CE
ICE-SF-EM	Serial fixture board, E-Motive
iLAND-1-H	Landing system
iLAND-1-C	Landing system, compact, Front Doors Only
IFIELD-MODULE-F	Brake or Motor Field module
LS-HSB-F	Landing system sensor board
LS-HB-F	Landing system header board
SC-HCDA	Serial hall call driver assembly
SC-HCNT-KIT	Serial hall call node timed, kit
SC-ION	Discrete to serial conversion board
24-03-0036	Ethernet switch, 8-port
24-04-0025	iView/iCue PC
24-10-0052	Network Interface Card for iCue PC



iControl AC with machine control and regenerative drives



iControl iLink cartop box

Spares and Replacement Parts

Motion 4000

Speeds to 400 FPM, up to 32 stops/64 openings, Simplex/Duplex/Group, dispatching groups to six cars.

Motion 4000 PC Boards and Components

Part #	Description
HC-CHP* / -M	CAN Hub and Power Supply Board (-M if iMonitor equipped)
HC-CTL*	Control Board
HC-MPU* / -M	Main Processor Unit Board (-M with mView Ethernet connection)
HC-RDR*	Rear Door Board
HC-UJO*	Universal Input/Output Board
MC-CPI*	Car Panel Interface Board
MC-LSI	Landing System Interface Board
SC-3HN	Three Input Serial Hall Call Node Board
OT-M00393*	CAN Interface for CE Driver
11-22-0010	CE Serial Fixture Driver Board
C-RJ12-xx (xx=length)	CAN Cables (CAN Hub to Boards in controller)
C-RJ11-CAN-xx	Car Panel to Cartop box (with serialized car calls)
TC-MPI*	Motion Processor Interface

* Board requires programming — 48 hours lead time.



Motion 4000 controller

Motion 4000 cartop box with EMCO rope tension load weigher



IntellaNet AC

IntellaNet AC Boards and Components

Part #	Description
26-95-0012	Echelon Module TP/XF-78
30-95-0007	24 VDC Power Supply
INET-RG-2K	Rope Gripper Board, 2K Compliant
INET-RLY-2K	Relay Board, 2K Compliant
LW4202	K-Tech Unit
OT-M00173	Fuse Board
OT-M00210	Leveling Unit Encoder Board
OT-M00233	Leveling Unit Pre-torque Board
OT-M00237	8-Channel I/O Expansion Board
OT-M00267	ETSL Board
OT-M00297	Leveling Unit Emitter/Detector Board
OT-M00299	48-Channel Hall Station Board
OT-M00331	Hall Station Expansion Board
OT-M00373	Lantern Card, HD w/ 4-pole Relay
OT-M00393	CAN Interface for CE Driver
OT-M00396	Relay Board with CAN I/F
OT-M00397	Display Board
OT-M00398	MPU Board
OT-M00399	16-Channel CAN I/F I/O Expansion Board
OT-M00421	Gripper Bypass Board, Rev 0.2
T-CEMC	CE Driver Board, Heavy Duty



IntellaNet AC controller



IntellaNet Cartop Box

IntellaNet or Tricon

Call 718 417 3131

Spares and Replacement Parts

Tricon AC

Tricon AC Boards and Components

Part #	Description
11-22-0008	CE Driver Board
30-95-0002	5V, 6A Power Supply
T-ACC	Access Board
T-BMS	BMS Interface Board
T-CEMC	CE Driver Board, Heavy Duty
T-CPU	CPU Board
T-GATEWAY	Gateway Board
TIO24D	I/O 24 Board
T-Limit	Limit Board, non 2K Controllers
T-Limit-2K	Limit Board, 2K Controllers
T-LON-FILTER	Filter Board for IO24D
T-MOD	MOD Door Operator Interface Board
T-MOM	MOM Door Operator Interface Board
T-PW5	PW5 Serial Interconnect Board
T-RB4-HS	Relay Board
TRICON-HHU	Handheld Unit
T-DIODE-INT	Relay to Limit Board Diode
T-TB4-SAF	Relay Board w/Safety Relays
T-TERM-F	F Terminal Board
T-TERM-L	L Terminal Board
T-TERM-O	O Terminal Board



Tricon AC controller



Tricon Cartop / Inspection Station

IntellaNet or Tricon

Call 718 417 3131

IMC-AC (Intelligent Motion Control)

IMC-AC PC Boards

Part #	Description
HC-CI/O	Call board
HC-DB-MOD	MOD Door operator board
HC-DPS-MOM/H	MOM/MOH door board
HC-I4O	I/O expander 16IN/4OUT
HC-IOX	I/O expander board
HC-PI/O	Power I/O board
IMC-ACIX*	Drive interface board
IMC-DAS	Data acquisition system board
IMC-DIO	Digital I/O board
IMC-GPA-SI	SCR power interface
MC-RS	RS232/422 board
SCR-RI	SCR relay interface board
Standard Only (Non-ASME 2000, A17.1)	
HC-RB4-SCRI**	Main relay board
SCR-PRI-EE	SCR Power relay interface board
SP-IMC-CGP4	Swing Panel (non ASME 2000)
ASME 2000, A17.1 Compliant Models Only	
SC-BASE-D	Bypass, access, overspeed, emergency brake board
SC-BASER-D	(SC-BASE-D) for rear door
SC-HDIO	High density input/output board
SC-SB2K**	Main safety relay board
SP-IMC-CGP4 2K	Swing Panel (ASME 2000)

* Suffix may change depending on drive used.

** Board requires configuration (24 hour lead time)

IMC-AC Components

Part #	Description
27-01-0001	Relay Power, A77DP contactor
27-01-0027	PRD11AYO form C
27-03-0004	Relay, 4 FORM C, HC4-AC115, W/LED
30-02-0001	Power supply tri-output 5V6A/12V1A
33-05-0002-A	Triac, 4A
33-08-0013	IGBT 50 A 1200V
RCNTWK	RC network 0.1MF & 47 OHM
RDNTWK	Diode network 22 ohm Res / 10V diode



Spares and Replacement Parts

VFMC-1000

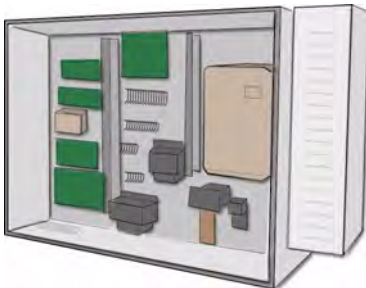
VFMC-1000 PC Boards

Part #	Description
HC-ACI *	AC interface
HC-ACIF	Flux vector drive interface
HC-CI/O	Call board
HC-DB-MOD	MOD door operator board
HC-DPS-MOM/H	MOM/MOH door board
HC-I4O	I/O expander 16IN/4OUT
HC-IOX	I/O expander board
HC-PI/O	Power call input/output board
Standard Only (Non-ASME 2000, A17.1)	
HC-RB4-VFAC*	Relay board AC
SP-CGP4	Swing Panel
SP-EHLOC	Swing panel/enhanced local
ASME 2000, A17.1 Compliant Models Only	
SC-BASE	Lock bypass, access, emergency brake, overspeed
SC-BASER	(SC-BASE) for rear doors
SC-HDIO	High density Input/Output board
SC-SB2K*	Main safety relay board
SP-CGP4-2K	Swing Panel (ASME 2000, A17.1)

VFMC-1000 Components

Part #	Description
27-03-0004	Relay, 4 FORM C, HC4-AC115, W/LED
27-05-0001	Relay, 2 FORM C PRD11AHO-120V, MBO
31-01-0008	Resistor 1/4W, 220-ohm, 5%
33-01-0008	Zener diode, 10V
33-05-0002-A	Triac, 4A
ACBU-L50	Dynamic braking unit (230VAC/50A)
RDNTWK	RD network 10V ZENER/22 1/4W

* Board requires configuration (24 hour lead time)



VFMC-1000 AC Controller

Photo unavailable. Form factor as above.

VFMC-1000-PTC (PTC-AC)

VFMC-1000-PTC PC Boards

Part #	Description
HC-ACI *	AC drive interface
HC-ACIF	Flux vector drive interface
HC-CI/O-E	Call board
HC-DAB	Duplex Adapter board
HC-DB-MOD	MOD door operator board
HC-DPS-MOM/H	MOM/MOH door board
HC-I4O	I/O expander 16IN/4OUT
HC-IOX	I/O expander board
HC-PCI/O	Power and Call I/O board
11-22-0006	Fixture interface, CE
Standard Only (Non-ASME 2000, A17.1)	
HC-RB4-VFAC*	Relay board AC
MC-PA	Peripherals Adaptor
MC-PCA-0A3	Main computer board
ASME 2000, A17.1 Compliant Models	
MC-PA-2K	Peripherals Adaptor
MC-PCA-0A-2K	Computer board
SC-BASE	Lock bypass, access, emergency brake, overspeed
SC-BASER	(SC-BASE) for rear doors
SC-HDIO	High density Input/Output board
SC-SB2K*	Main safety relay board

* Board requires configuration (24 hour lead time)

VFMC-1000-PTC Components

Part #	Description
27-03-0004	Relay, 4 FORM C, HC4-AC115, W/LED
27-05-0001	Relay, 2 FORM C PRD11AHO-120V, MBO
33-05-0002-A	Triac, 4A
ACBU-L50	Dynamic braking unit (230VAC/50A)
RDNTWK	RD network 10V Zener/22 1/4W



VFMC-1000-PTC AC Controller
ASME A17.1-2004 Model Shown

Spares and Replacement Parts

DC Traction — SCR

DC traction controls include:

- [iControl DC](#)
- [Tricon DC \(See Tricon AC\)](#)
- [IntellaNet DC \(See IntellaNet AC\)](#)
- [IMC-SCR](#)
- [IMC-PERFORMA](#)
- [VVMC-1000-SCR](#)
- [VVMC-1000-PTC-SCR \(PTC-SCR\)](#)

For AC controls: [“AC Traction” on page 3.](#)

For Hydraulic controls: [“Hydraulic” on page 18.](#)

For motor/generator controls: [“Motor/Generator” on page 22.](#)

For escalator controls: [“Motion 3000ES Escalator Controller” on page 26.](#)

iControl DC

iControl DC PC Boards and Components

Part #	Description
C-COMM-9P-F-HCDA	Serial hall call, ribbon to 9-pin D cable
ICE-FLASH-32MB	Flash card, 32MB
ICE-SRAM-2MB	Static RAM, 2MB
i-BOX-1	iBox Main processing system
i-BOX-1-MI	iBox, No DL Bypass
ICE-COP	Serial Car Operating Panel board
ICE-COP-X	Serial Car Operating Panel Expansion board
ICE-CTP	Cartop processor board (iLink)
ICE-EB	Emergency brake board
ICE-IEQ	Earthquake board
ICE-IRB	Relay Board
ICE-IRD	Rear door board
ICE-MIAC	Input board
ICE-MOR	Output board
ICE-RG	Rope gripper board
ICE-SAF	Safety Processor board
ICE-SF-CE	Serial fixture board, CE
ICE-SF-EM	Serial fixture board, E-Motive
iLAND-1-H	Landing system
iLAND-1-C	Landing system, compact, Front Doors Only
IFIELD-MODULE-F	Brake or Motor Field module
LS-HSB-F	Landing system sensor board
LS-HB-F	Landing system header board
SC-HCDA	Serial hall call driver assembly
SC-HCNT-KIT	Serial hall call node timed, kit
SC-ION	Discrete to serial conversion board
24-03-0036	Ethernet switch, 8-port
24-04-0025	iView/iCue PC
24-10-0052	Network Interface Card for iCue PC



iControl DC Controller with
MCE 12-Pulse SCR drive



iControl iLink cartop box

Spares and Replacement Parts

IMC-SCR

IMC-SCR PC Boards

Part #	Description
HC-CI/O	Call board
HC-DB-MOD	MOD door operator board
HC-DPS-MOM/H	MOM/MOH door board
HC-I4O	I/O expander 16IN/4OUT
HC-IOX	I/O expander board
HC-PI/O	Power I/O board
IMC-DAS	Data acquisition system board
IMC-DDP	Digital drive processor board
IMC-DIO	Digital I/O board
IMC-GPA-SI	SCR power interface
MC-RS	RS 232/422 board
SCR-LGA	Advanced logic board
SCR-PRI-EE	SCR power relay interface board
SCR-RI	SCR relay interface board
Standard Only (Non-ASME 2000, A17.1)	
HC-RB4-SCRI *	Main relay board
SP-IMC-CGP4	Swing Panel (non ASME 2000)
ASME 2000, A17.1 Compliant Models Only	
SC-BASE-D	Bypass, access, overspeed, emergency brake
SC-BASER-D	(SC-BASE-D) for rear doors
SC-HDIO	High density input/output board
SC-SB2K*	Main safety relay board
SP-IMC-CGP4 2K	Swing Panel (ASME 2000)

* Board requires configuration (24 hour lead time)

IMC-SCR Components

Part #	Description
17-02-0032	Semiconductor fuse 250A
27-01-0001	Relay power A77 DP contactor
27-01-0027	PRD11AYO form C
27-03-0004	Relay,4 FORM C, HC4-AC115, W/LED
30-02-0001	Power supply tri-output 5V6A/12V1A
33-05-0002-A	Triac, 4A
33-08-0013	Brake IGBT 50A 1200V
RCNTWK	RC network 0.1MF & 47 OHM
RDNTWK	Diode network

IMC-SCR DC Control with MCE 12-Pulse
SCR Drive



IMC Performa

IMC Performa PC Boards

Part #	Description
HC-CI/O	Call board
HC-DB-MOD	MOD door operator board
HC-DPS-MOM/H	MOM/MOH door board
HC-I4O	I/O expander 16IN/4OUT
HC-IOX	I/O expander board
HC-PI/O	Power I/O board
IMC-DCP	Drive control processor board
IMC-DDP	Digital drive processor board
IMC-SPI	SCR power interface board
MC-RS	RS 232/422 board
SCR-LGA	Advanced logic board
SCR-PRI-EE	SCR power relay interface board
SCR-RIX	SCR relay interface board
Standard Only (Non-ASME 2000, A17.1)	
HC-RB4-SCRI *	Main relay board
SP-IMC-CGP4	Swing Panel
ASME 2000, A17.1 Compliant Models Only	
SC-BASE-D	Bypass, access, overspeed, emergency brake
SC-BASER-D	(SC-BASE-D) for rear doors
SC-HDIO	High density input/output board
SC-SB2K*	Main safety relay board
SP-IMC-CGP4 2K	Swing Panel

* Board requires configuration (24 hour lead time)

IMC Performa Components

Part #	Description
17-02-0032	Semiconductor fuse 250A
27-01-0001	Relay power A77 DP contactor
27-01-0027	PRD11AYO form C
27-03-0004	Relay,4 FORM C, HC4-AC115, W/LED
30-02-0001	Power supply tri-output 5V6A/12V1A
33-05-0002-A	Triac, 4A
RCNTWK	RC network 0.1MF & 47 OHM
RDNTWK	Diode network

IMC-Performa DC Controller with
MCE 12-Pulse SCR Drive



Spares and Replacement Parts

VVMC-1000-SCR

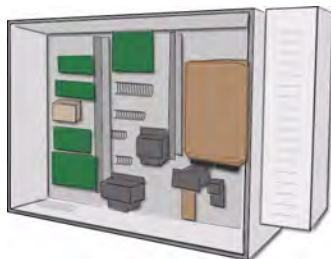
VVMC* Board requires configuration (24 hour lead time)-1000-SCR PC Boards

Part #	Description
HC-ACI*	Drive interface
HC-ACIF	Additional drive interface
HC-CI/O	Call board
HC-DB-MOD	MOD door operator board
HC-DPS-MOMH	MOM/MOH door board
HC-I4O	I/O expander 16IN/4OUT
HC-IOX	I/O expander board
HC-PI/O	Power and Call I/O board
HC-SCR	SCR Interface board
MC-RS	RS232/422 board
Standard Only (Non-ASME 2000, A17.1)	
HC-RB4-SCR*	Main relay board
SP-CGP4	Swing Panel
SP-EHLOC	Swing panel/enhanced local
ASME 2000, A17.1 Compliant Models	
SC-BASE	Bypass, access, overspeed, emergency brake
SC-BASER	(SC-BASE) for rear doors
SC-HDIO	High density input/output board
SC-SB2K*	Main safety relay board
SP-CGP4-2K	Swing panel

* Board requires configuration (24 hour lead time)

VVMC-1000-SCR Components

Part #	Description
27-01-0001	Relay Power, A77DP contactor
27-01-0024	Relay, 4 FORM C, PM17AY-120VAC
27-01-0026	Relay,4 FORM C, PM17AY-240VAC
27-01-0027	PRD11AYO FORM C
27-01-0055	Relay, 4 FORM C, HC4-DC24V
27-03-0004	Relay,4 FORM C, HC4-AC115, W/LED
33-05-0002-A	Triac, 4A
RCNTWK	RC network 0.1MF & 47 OHM



VVMC-1000-SCR DC Controller

Photo unavailable. Form factor as to left.

VVMC-1000-PTC-SCR (PTC-SCR)

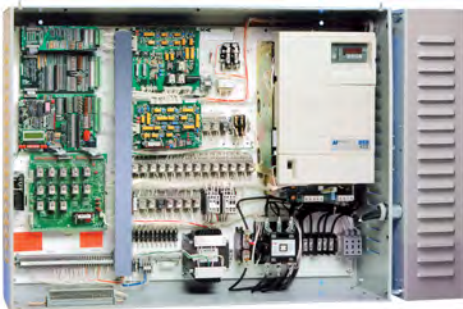
VVMC-1000-PTC-SCR PC Boards

Part #	Description
HC-ACI *	Drive interface
HC-ACIF	Additional drive interface
HC-CI/O-E	Call board
HC-DB-MOD	MOD door operator board
HC-DPS-MOM/H	MOM/MOH door board
HC-I4O	I/O expander 16IN/4OUT
HC-IOX	I/O expander board
HC-PCI/O	Power and Call I/O board
Standard Only (Non-ASME 2000, A17.1)	
HC-RB4-SCR*	Main relay board
MC-PA	Peripherals Adaptor
MC-PCA-0A3	Main computer board
ASME 2000, A17.1 Compliant Models Only	
MC-PA2K	Peripherals adaptor board
MC-PCA-0A2K	Computer board
SC-BASE	Bypass, access, overspeed, emergency brake
SC-BASER	(SC-BASE) for rear doors
SC-HDIO	High density input/output board
SC-SB2K*	Main safety relay board

* Board requires configuration (24 hour lead time)

VVMC-1000-PTC-SCR Components

Part #	Description
27-01-0001	Relay Power, A77DP contactor
27-01-0024	Relay, 4 FORM C, PM17AY-120VAC
27-01-0026	Relay,4 FORM C, PM17AY-240VAC
27-01-0027	PRD11AYO FORM C
27-01-0055	Relay, 4 FORM C, HC4-DC24V
27-03-0004	Relay,4 FORM C, HC4-AC115, W/LED
33-05-0002-A	Triac, 4A
RCNTWK	RC network 0.1MF & 47 OHM



VVMC-1000-PTC-SCR
DC Controller

Hydraulic

Hydraulic controls are available in standard or ASME 2000 compliant configurations. Hydraulic controls include:

- [Motion 2000](#)
- [HMC-1000-PHC](#)
- [HMC-1000-HS](#)

For AC controls, please refer to [“AC Traction” on page 3](#).

For DC-SCR controls, please refer to [“DC Traction — SCR” on page 12](#).

For motor/generator controls, please refer to [“Motor/Generator” on page 22](#).

For escalator controls, please refer to [“Motion 3000ES Escalator Controller” on page 26](#).

Motion 2000

Speeds to 200 FPM, up to 32 stops/64 openings, Simplex/Duplex/Group, dispatching groups to six cars.

Motion 2000 Circuit Boards

Board	Name
HC-CHP*	CAN Hub and Power Supply Board
HC-CTL*	Control Board
HC-DVR*	Driver Board
HC-MPU*	Main Processor Unit Board
HC-RDR*	Rear Door Board
HC-UIO*	Universal Input/Output Board
MC-CPI*	Car Panel Interface Board
MC-LSI	Landing System Interface Board
OT-M00393*	CAN Interface for CE Driver
11-22-0010	CE Serial Fixture Driver Board
C-RJ12-xx (xx=length)	CAN Cables (CAN Hub to Boards in controller)
C-RJ11-CAN-xx	Car Panel to Cartop box (with serialized car calls)

* Board requires programming (48 hour lead time)



Motion 2000 Hydraulic Control

Spares and Replacement Parts

HMC-1000-PHC (Field Programmable)

HMC-1000-PHC PC Boards

Part #	Description
HC-CI/O-E	Call board
HC-DAB	Duplex Adapter board
HC-DB-MOD	MOD door operator board
HC-DPS-MOMH	MOM/MOH door board
HC-I4O	I/O expander 16IN/4OUT
HC-IOX	I/O expander board
HC-PCIO	Power and Call I/O board
Standard Only (Non-ASME 2000, A17.1)	
MC-PA	Peripherals Adaptor
MC-PCA-0A3	Main computer board
HC-RBH *	Main relay board
ASME 2000, A17.1 Compliant Models	
MC-PA-2K	Peripherals Adaptor
MC-PCA-0A2K	Main computer board
SC-BAH	Lock bypass, access board
SC-BAHR	Lock bypass, access, Rear door
SC-HDIO	High density input/output board
SC-SB2K-H*	Main safety relay board

* Board requires configuration (24 hour lead time)

HMC-1000-PHC Components

Part #	Description
27-03-0004	Relay, 4 FORM C, HC4-AC115, W/LED
27-05-0001	Relay, 2 FORM C PRD11AHO-120V, MBO
30-01-0001	Power supply 5V 3A
33-05-0002-A	Triac, 4A
RCNTWK	RC network 0.1MF & 47 OHM



HMC-1000-PHC Hydraulic Control

HMC-1000-HS (Factory Programmable)

HMC-1000 PC Boards

Part #	Description
HC-CI/O	Call board
HC-DAB	Duplex Adapter board
HC-DB-MOD	MOD door operator board
HC-DPS-MOM/H	MOM/MOH door board
HC-I4O	I/O expander 16IN/4OUT
HC-IOX	I/O expander board
HC-PI/O	Power and Call I/O board
Standard Only (Non-ASME 2000, A17.1)	
HC-RBH*	Main relay board
SP-CGP4	Swing Panel
SP-EHLOC	Swing Panel, Enhanced Local
ASME 2000, A17.1 Compliant Models Only	
SC-BAH	Lock bypass, access board
SC-BAHR	Lock bypass, access, Rear door
SC-HDIO	High density input/output board
SC-SB2K-H*	Main safety relay board
SP-CGP4-2K	Swing Panel

*Board requires configuration (24 hour lead time)

HMC-1000 Components

Part #	Description
27-03-0004	Relay, 4 FORM C, HC4-AC115, W/LED
27-05-0001	Relay, 2 FORM C PRD11AHO-120V, MBO
30-01-0001	Power supply 5V 3A
33-05-0002-A	Triac, 4A
RCNTWK	RC network 0.1MF & 47 OHM



HMC-1000 Hydraulic Control

Motor/Generator

Motor/Generator products include:

- [IMC-MG](#)
- [VVMC-1000](#)
- [VVMC-1000-PTC \(PTC-MG\)](#)

For AC controls, please refer to [“AC Traction”](#) on page 3.

For DC-SCR controls, please refer to [“DC Traction — SCR”](#) on page 12.

For hydraulic controls, please refer to [“Hydraulic”](#) on page 18.

For escalator controls, please refer to [“Motion 3000ES Escalator Controller”](#) on page 26.

IMC-MG

IMC-MG PC Boards

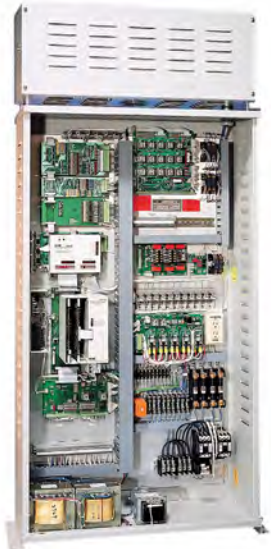
Part #	Description
HC-CI/O	Call board
HC-DB-MOD	MOD door operator board
HC-DPS-MOM/H	MOM/MOH door board
HC-I4O	I/O expander 16IN/4OUT
HC-IOX	I/O expander board
HC-PI/O	Power I/O board
HC-RB4*	Main relay board
IMC-DAS	Data acquisition F/MG
IMC-DIO	Digital I/O F/MG
IMC-GPA	IMC power interface
IMC-PRI	Power relay interface board, rev 3-0
IMC-RI	Relay interface board, rev 3-5
MC-ARS	RS232 board
MC-MRS	RS232/422 board
SP-IMC-S	Swing panel IMC

* Board requires configuration (24 hour lead time)

IMC-MG Components

Part #	Description
27-01-0001	Relay Power, A77 DP contactor
27-01-0027	PRDIIAYO 2 FORM C
27-03-0004	Relay, 4 FORM C, HC4-AC115, W/LED
27-05-0001	Relay, 2 FORM C PRD11AHO-120V, MBO
30-02-0001	Power supply 5V6A/ 12V1A
33-05-0002-A	Triac, 4A
33-08-0013	Brake IGBT 50A
RCNTWK	RC network 0.1MF & 47 ohm

IMC-MG Motor/Generator Controller



Spares and Replacement Parts

VVMC-1000 (Motor/Generator)

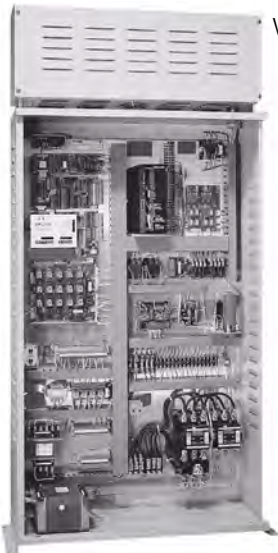
VVMC-1000 Motor/Generator PC Boards

Part #	Description
HC-CI/O	Call board
HC-DB-MOD	MOD door operator board
HC-DPS-MOM/H	MOM/MOH door board
HC-I4O	I/O expander 16IN/4OUT
HC-IOX	I/O expander board
HC-RB4*	Relay board AC
HC-TAB-2*	Tract adaptor board
HC-PI/O	Power and call I/O
MC-ARS	RS232 board
MC-MRS	RS232/422 board
SP-EHLOC	Swing panel/enhanced local

* Board requires configuration (24 hour lead time)

VVMC-1000 Motor/Generator Components

Part #	Description
27-03-0004	Relay, 4 FORM C, HC4-AC115, W/LED
33-05-0002-A	Triac, 4A
RCNTWK	RC network 0.1MF & 47 OHM



VVMC-1000 Motor/Generator Controller

VVMC-1000-PTC (PTC-MG)

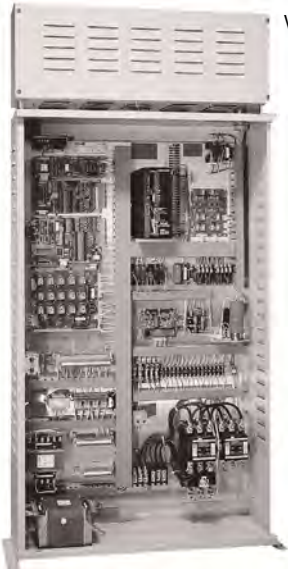
VVMC-1000-PTC PC Boards

Part #	Description
HC-CI/O-E	Call board
HC-DB-MOD	MOD door operator board
HC-DPS-MOM/H	MOM/MOH door board
HC-I4O	I/O expander 16IN/4OUT
HC-IOX	I/O expander board
HC-RB4*	Relay board AC
HC-TAB-2*	Tract adaptor board
HC-PCIO	Power and Call I/O board
MC-PCA-0A	Main computer board
VVC-2-G	Drive pattern generator

* Board requires configuration (24 hour lead time)

VVMC-1000-PTC Components

Part #	Description
27-03-0004	Relay,4 FORM C, HC4-AC115, W/LED
33-05-0002-A	Triac, 4A
RCNTWK	RC network 0.1MF & 47 OHM



VVMC-1000-PTC Motor/Generator Controller

Spares and Replacement Parts

Motion 3000ES Escalator Controller

Motion 3000ES is a field programmable escalator control. Motion 3000ES controls provide hardware flexibility, allowing enclosure size and motor drive, control keypad, and processor board locations (in cabinet or remote) to vary depending on installation needs. Escalator controls are available in VVVF Variable Speed or Wye/Delta Direct Line Control versions.

Motion 3000 Escalator Control Boards

Part #	Description
30-01-0013	Pwr Sup 90-264VAC 24VDC 2.4A 60C SWT DIN
33-20-0006	Prox Sensor Inductive 4mm w/5m Cable
33-20-0007	Prox Sensor Inductive 15mm w/5m Cable
35-12-K09-24D	Contactator ATL 6.8A 24VDC W/Diode
27-01-0055	RLY 4FORMC 3A 24VDC SCKT MT
EC-INSP-BOX	Escalator Inspection Box
EC-ADJ-PNL	Escalator Adjustment Panel
EC-ADJ-LCD-PNL	Escalator LCD Adjustment Panel
EC-MCB	Escalator Main Control Board
EC-SCB	Escalator Secondary Control Board
27-07-0009	Rly Rev/PH Panel 208-240VAC 1FormC
27-07-0010	Rly Rev/PH Panel 380-480VAC 1FormC
35-12-KFC20	Cont Assy-Aux Cont Topmt 2NO for 100-K09
35-12-C23-24D	Contactator ATL 5/5/13/15/15 HP 24VDC W/D
35-12-C43-24D	Contactator ATL 10/10/21/25/30 HP 24VDC
35-14-SB11	Contactator Acc Aux Cont Sd Mt 1NO 1NC
35-14-MCA02	Contactator ACC Interlock Mech/Elec

Main Upper entry cabinet
24" x 18" x 8" (61 x 46 x 20 cm)



Drive cabinet (if used)
24" x 12" x 12" (61 x 31 x 31 cm)



Main cabinet (top view) controls,
standard programmer, and
inspection control plug



Lower entry cabinet
12" x 12" x 4" (31 x 31 x 10 cm)



Inspection control



Spares and Replacement Parts

SCR Drives

MCE System 12 SCR drives are available in different versions depending upon power requirements.

MCE System 12 SCR Drive

The MCE System 12 SCR drive may be used on any of several MCE DC elevator controllers.



System 12 Drive Components

Part #	Description
17-02-0032	Semiconductor fuse 250 A
33-03-0011	SCR (162 A, 1600V, SCR pack)
33-03-0021	SCR (330 A, 1200V SCR pack)
33-03-0014	Dual diode pack (105 A, 1500V diode/diode)
35-12-0009	Contactors
SCR-LGA	IMC-SCR advanced logic board
SCR-PS	Power supply board

Group Controllers

Group Controllers from MCE include:

- [iCentral for iControl](#)
- [mGroup for Motion 2000 and Motion 4000](#)
- [IntellaNet Group](#)
- [M3 and AIM controls for other product lines.](#)

iCentral

iCentral group control for iControl elevators permits group sizes from two to fifteen cars servicing up to 150 floors.

iCentral PC Boards and Components

Part #	Description
24-03-0036	Ethernet hub, 8-port
C-ETHERNET-BLU-10	Ethernet cable, 10 ft. blue
C-ETHERNET-BLU-5	Ethernet cable, 5 ft. blue
C-ETHERNET-BLU-50	Ethernet cable, 50 ft. blue
C-ETHERNET-ORG-10	Ethernet cable, 10 ft. orange
C-ETHERNET-ORG-5	Ethernet cable, 5 ft. orange
C-ETHERNET-ORG-50	Ethernet cable, 50 ft. orange
SC-HCDA	Serial hall call driver
SC-HCE-EM	Serial to Ethernet module
SC-HCNT-KIT	Hall call node kit, timed
SC-HCONN-KT	Serial hall call connector kit
SC-ION	iCentral I/O board



Spares and Replacement Parts

mGroup

Dispatching for Motion 4000 and Motion 2000 controllers. Supports group sizes to six cars serving up to 32 floors and 64 openings.

mGroup PC Boards and Components

Part #	Description
HC-CHP	CAN Hub and Power Supply Board
HC-DAB	Duplex Adapter Board
HC-UIO	Universal Input/Output Board
MC-MCP	Group Processor and Display Assembly
SC-3HN	Three Input Serial Hall Call Node Board
C-RJ12-xx (xx=length)	CAN Cables (CAN Hub to Board)



IntellaNet Group

The IntellaNet dispatcher supports groups of up to nine cars serving 64 single or double openings.



IntellaNet Group PC Boards and Components

Part #	Description
OT-M00237	8 Channel I/O board
OT-M00299	Car Station Board
OT-M00397	Display Board
OT-M00398	MPU Board

IntellaNet or Tricon
Call 718 417 3131

M3 or AIM Group System

M3 or AIM PC Boards

Part #	Description
HC-CI/O	Call I/O board
HC-I0X	I/O expander board
HC-I40	I/O expander 16in/4out
MC-ARS	AUX RS-232/422 board
MC-MRS-1	Mini RS-232/422 board
MC-RS	RS-232/422 board
SP-GPM3-CGP4	Swing panel Group M3
Serial Hall Call	
SC-HCC-48/-98	Serial hall call controller board
SC-HCDA	Hall call driver assembly
SC-HCN	Hall call node board



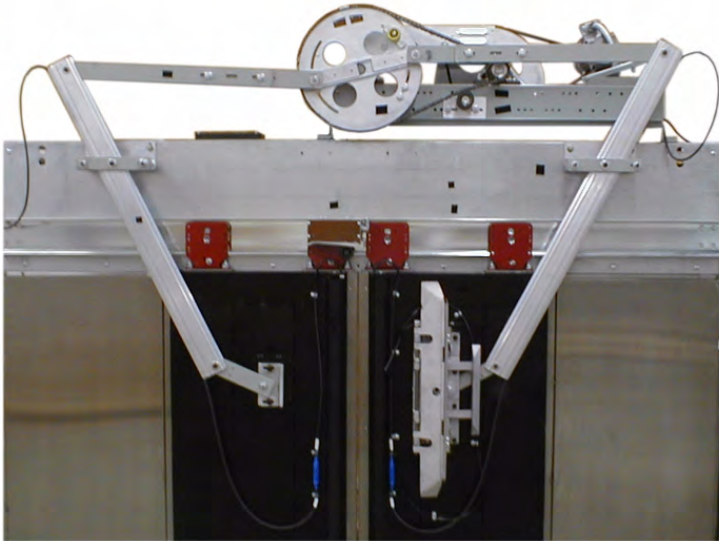
Door Operators

MCE provides complete door operators and/or motor/drive solutions (SmarTraq complete or SmarTraq upgrade kits).

Complete Door Operators

MCE provides complete door operator solutions for side-slide, two-speed side-slide, and center-parting elevator doors. Complete harmonic operators include:

- SmarTraq limitless drive and motor package
- Job-engineered linkage assembly
- All required hanger and assembly hardware
- Clutch (if required)
- Photo eye (optional)
- Safety edge (optional)



SmarTraq

SmarTraq closed-loop, limitless door operators are designed to replace older mechanical circuits, cams, and resistors with a digital control system providing precise door operation and reliable performance. SmarTraq dramatically improves door operation regardless of lobby door mass and wind loading conditions. SmarTraq is A17.1, CSA-B44.1 compliant.



Harmonic SmarTraq, rear view

SmarTraq drives may be used only with SmarTraq motors.

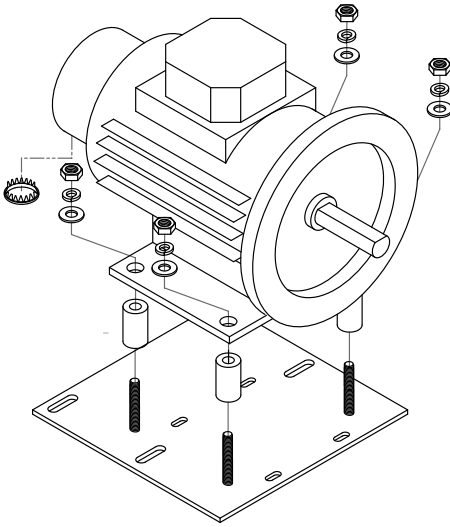
Drive Part #	Description
HC-DO-DRIVE-R7	SmarTraq Drive, Revision 7
HC-DO-DRIVE-MODULE	Replacement circuit board set

SmarTraq motors may only be used with the SmarTraq drive. SmarTraq motors are available to support the operators listed below.

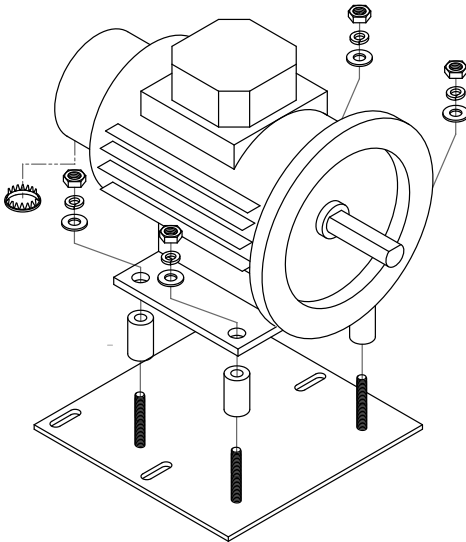
SmarTRAQ Motor	Supports
MOTOR 4150-B1	MAC PMSSC, Westinghouse EZ
MOTOR 4150-B3	Dover DC and HD
MOTOR 4151-B1	Armor C4, GAL (all models), Haughton T and T1, Otis 7782, Westinghouse E and HY, MAC.
MOTOR 4151-F	Otis 7300, Westinghouse A, B, and BB2
MOTOR 4152-B2	Haughton TH
MOTOR 4157-F	Otis 6970

Spares and Replacement Parts

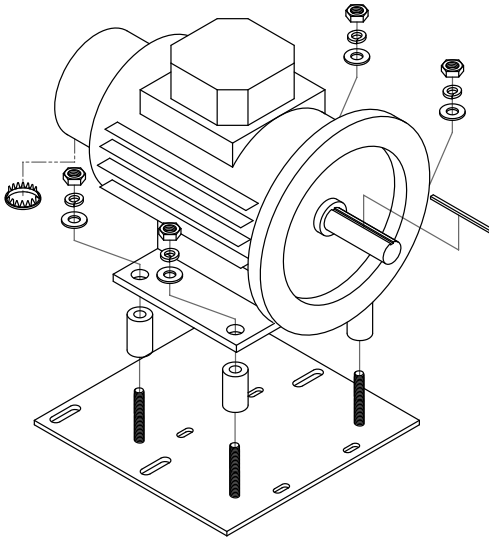
Model 4150-B1



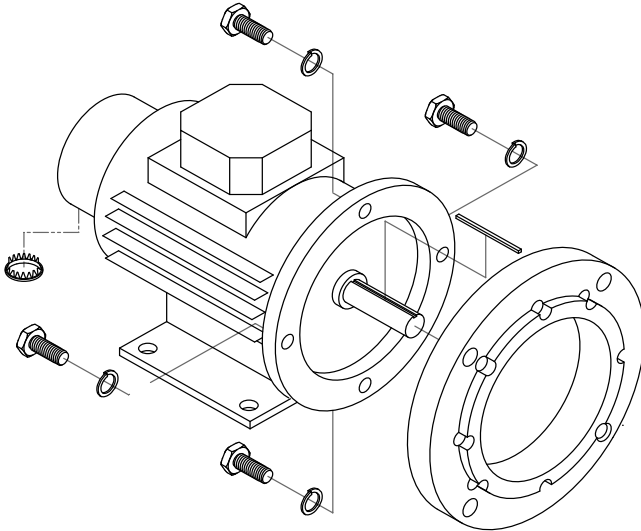
Model 4150-B3



Model 4151-B1

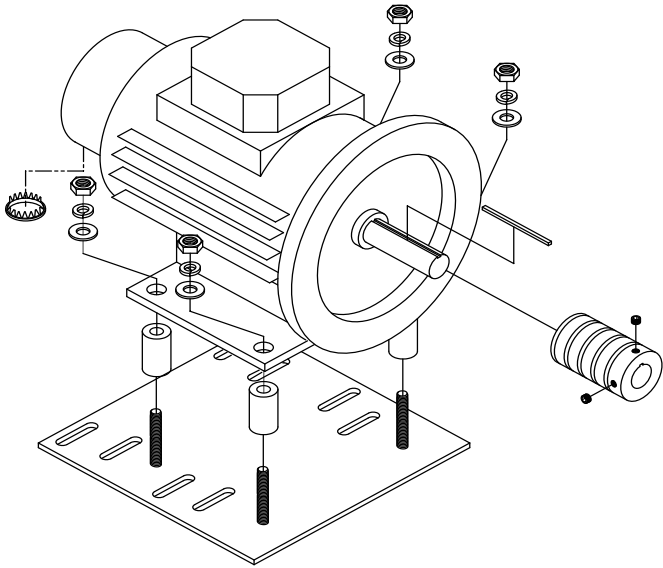


Model 4151-F

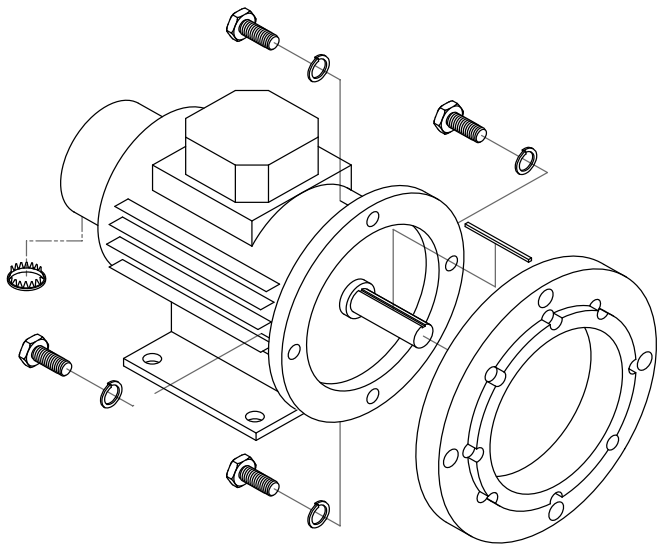


Spares and Replacement Parts

Model 4152-B2



Model 4157-F

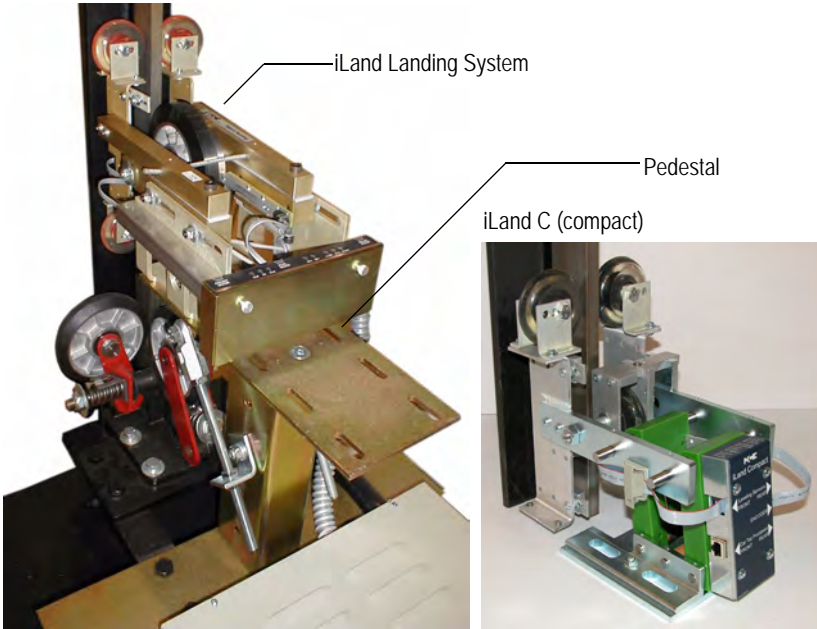


Landing Systems

Landing systems include iLand for iControl, [ELGO](#) for Motion systems, [SET-9000](#) for Tricon, and [LS-QUAD-2](#), [LS-QUIK](#), [LS-STAN](#), and [LS-QUTE](#) for other products.

iLand / iLand C

iLand is the cartop landing system for iControl applications.



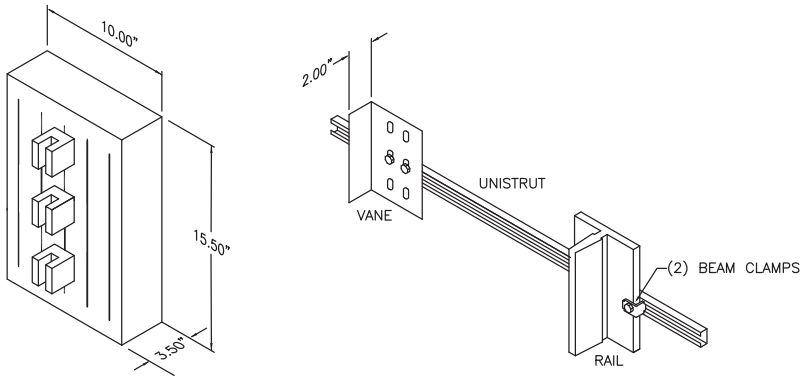
iLand PC Boards and Components

Part #	Description
C-HB/QSB-6 / -12	Cable, header board to sensor (6-inch or 12-inch)
I-LAND-1	iLand assembly (front doors only)
I-LAND-1-C	iLand assembly, compact (front doors only)
40-14-0019	Landing Zone magnet
LS-HSB-F	Header Board
LS-HB-F	Header Board
LS-PEDESTAL-BSE	Landing system pedestal kit (requires center column)
40-25-0015	14-inch center column
40-25-0018	20-inch center column

Spares and Replacement Parts

iLand Slide Guide

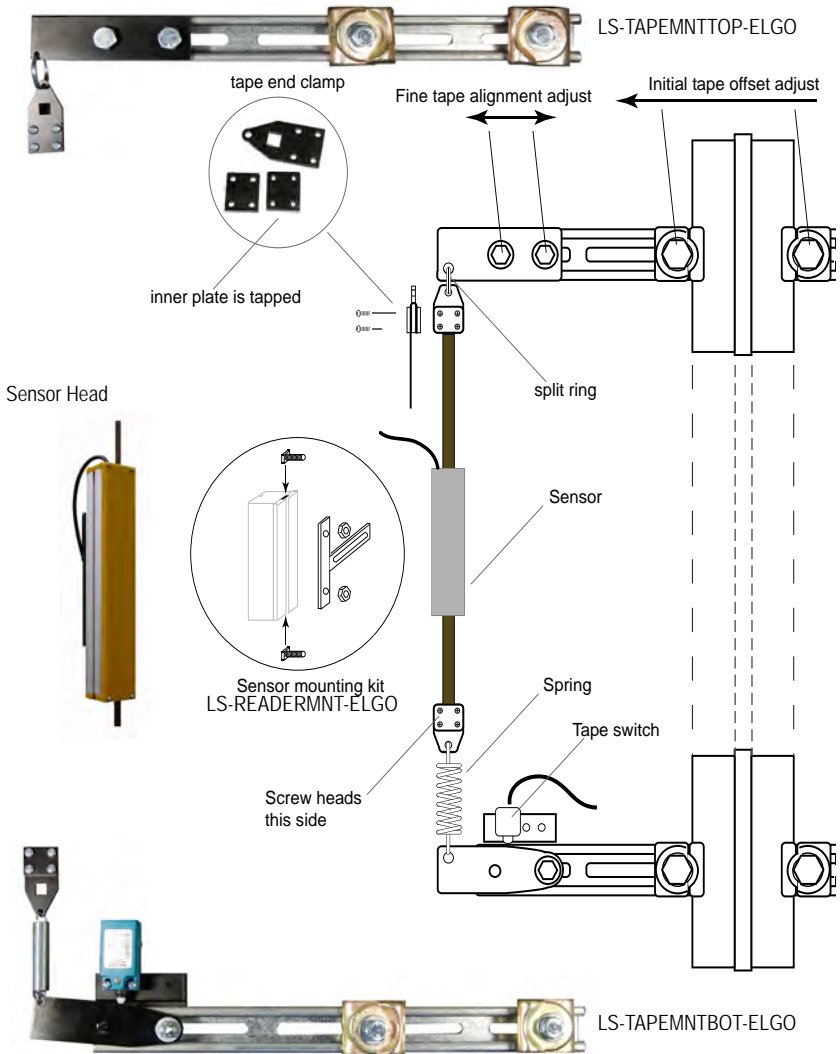
Used where conditions prohibit using the traditional iLand with encoding wheel.



iLand Slide Guide Landing System Components

Part #	Description
LS-MRDF	Machine Room Distance Feedback board
LS-PSB	Landing system proximity sensor board
LS-STAN5-SG-R-ASSY	Cartop leveling system assembly

Motion ELGO Landing System



Motion Control ELGO Components

Part #	Description
LS-TAPEMNTTOP-ELGO	Tape mount arm/kit, top
LS-TAPEMNTBOT-ELGO	Tape mount arm/kit, bottom
LS-READERMNT-ELGO	Sensor head mounting kit
TAPE-MT-ELGO	Mounting kit, contains all three kits listed above
LS-TAPEADPTR-ELGO	Adapter kit for 8# rail
11-02-0033	Sensor head
40-13-0033	Magnetic tape

Spares and Replacement Parts

SET-9000

The SET-9000 landing system uses solid state sensors to detect the presence of magnetic strips placed on a length of steel tape that runs the length of the elevator hoistway. Magnetic strips are placed along the tape in three, distinct rows. The center row is used for “leveling” magnets. The left hand row is used for up direction “slowdown” magnets. The right hand row is used for down direction “slowdown” magnets.

The sensor head containing the solid state sensors is mounted on the elevator car so that it “rides” the steel tape as the car moves, detecting and using the magnets to control floor approach and leveling.



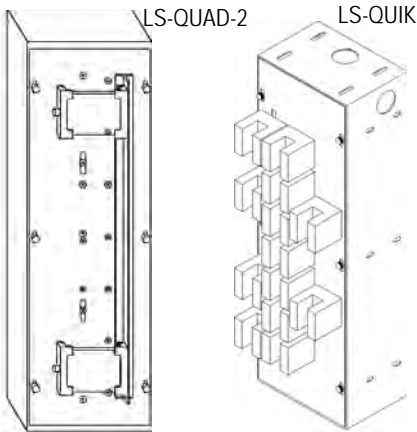
Sensor and mount

SET-9000 Components

Part #	Description
45-95-0101	N Pole Magnetic Tape, 6-inches
45-95-0102	S Pole Magnetic Tape, 6-inches
C-95-0078	Cable M/F DB 15-pin, 8 foot
LS-T-SET9000-CB	Control Board
LS-T-SET9000-HM	Head mounting kit
LS-T-SET9000-MC	Channels kit
LS-T-SET9000-TC	Tape Clamp

IntellaNet or Tricon
Call 718 417 3131

LS-QUAD-2 and LS-QUIK



LS-QUAD-2 Components

Part #	Description
11-20-0100	Tape guide
33-05-0002-A	4 A TRIAC 5MA Gate DR
33-05-0005-A	8 A TRIAC MAC 228A10
40-10-0003	Tape
40-11-0001	6" magnet
40-11-0007	2.5" magnet
40-11-0008	5" magnet
40-11-0009	7.5" magnet
40-11-0010	10" magnet
HC-DFLS	DF landing system board
HC-SB1	Sensor board -LS QUAD
LS-PS1	Mag proximity switch

LS-QUIK-1 Components

Part#	Description
33-05-0002-A	4 A TRIAC 5MA Gate DR
33-05-0005-A	8 A TRIAC MAC 228A10
HC-DFQ	DF landing system bd (QUICK)
LSQK2-ENCDR	LS-QUICK encoder and wheel
LSQK2-ENCDR-100	Encoder and wheel
PEN-VANE-12#	Proximity encoder vane assembly, 12# rail
PEN-VANE-15#	Proximity encoder vane assembly, 15# rail
PEN-VANE-30#	Proximity encoder vane assembly, 30# rail
VS-1L	Proximity switch
LS-PEDESTAL-BSE	Landing system pedestal kit (requires center column)
40-25-0015	14-inch center column
40-25-0018	20-inch center column

Spares and Replacement Parts

LS-STAN and LS-QUTE

LS-STAN



LS-QUTE



LS-STAN (LS-STAN5) (LS-STAN7)

Part #	Description
VS-1A-H	Proximity switch with hardware

LS-QUTE

Part#	Description
11-10-0002-B	Regular tape
11-20-0100	Tape guide
40-10-0004	Stainless steel tape
40-14-0003	6" magnet
40-14-0002	3" magnet
40-14-0020	1.5" magnet
HC-IPLS	Landing system board
LS-PS2	Mag proximity switch
P4-VANE-12#	Vane assembly, 8/11/12# rail
P4-VANE-15#	Vane assembly, 15/18-1/2# rail
P4-VANE-30#	Vane assembly, 22-1/2/30# rail
P4-VANE-3	3" vane and mounting hardware

Power Loss Mitigation

MCE provides two products to mitigate the effects of commercial power failure on traction elevator systems. Both are for AC drive controllers only.

TAPS (Traction Auxiliary Power Supply)

TAPS is an intelligent UPS system that provides power during a commercial power failure to automatically move a car to an adjacent landing and open the doors to allow passengers to exit.



TAPS

Part#	Description
TAPS-VF	Control Board
30-05-0023	Battery, 12V, 7.2AH
35-04-0037	Contact, surge suppressor, 3RT1055, 6kVA-240
35-04-0038	Interlock Adapter for 35-95-0006, 6kVA-240
35-12-0010	Aux Contactor side mt, 1NO, 1NC, 3kVA, 6kVA-480
35-12-0209	Contactor, mechanical links, 10mm, 3kVA, 6kVA-480
35-95-0006	Interlock, 3RA1954-2A, 6kVA-240
35-95-0014	Interlock, 50/65/80/91A, 3kVA, 6kVA-480
35-95-0034	Contactor, ATL, 25/30/60/75HP, 6kVA-480
35-95-0037	Contactor, ATL 50/60/125/150HP, 6kVA-240
35-95-0050	Contact, surge suppressor, 3kVA, 6kVA-480
35-95-0147	Contactor, 3kVA
30-05-0004	Battery, 3V, 1000MAH

Spares and Replacement Parts

Video Assisted Rescue System



Used primarily for machine room-less installations, this system uses a camera mounted on the elevator car, landing signs in the hoistway, a battery/inverter, and a viewing screen and controls in the elevator controller to allow a technician to bring the car safely to a landing and manually open the doors to allow passengers to exit during a commercial power failure.

Video Assisted Rescue System

Part#	Description
60-52-0008	BNC to RCA (plug) adapter
60-52-0009	BNC to discrete wires adapter (Balun)
60-52-0010	Video LCD
60-52-0012	Switch Panel

Traveling and Hoistway Cables

MCE provides factory matched and labeled traveling and hoistway cables and accessories for iControl and Tricon elevator installations. Individual wires within each cable bundle are labeled (every several inches) with their respective machine room and cartop connections. You receive exactly the cables you need (with 10% spares included), saving the expense of cable bundles larger than required or of multiple cable bundles to achieve adequate capacity.

iControl

- [44-03-0024](#), Large Traveling Cable
- [44-03-0025](#), Small Traveling Cable
- [44-03-0026](#), Large Hoistway Cable
- [44-03-0027](#), Small Hoistway Cable

Tricon

- [44-03-0029](#), Traveling Cable

Hardware

- [40-02-0177](#), Saddle Bracket
- [44-08-0007](#), Small Kellem Grip
- [44-08-0008](#), Large Kellem Grip

Spares and Replacement Parts

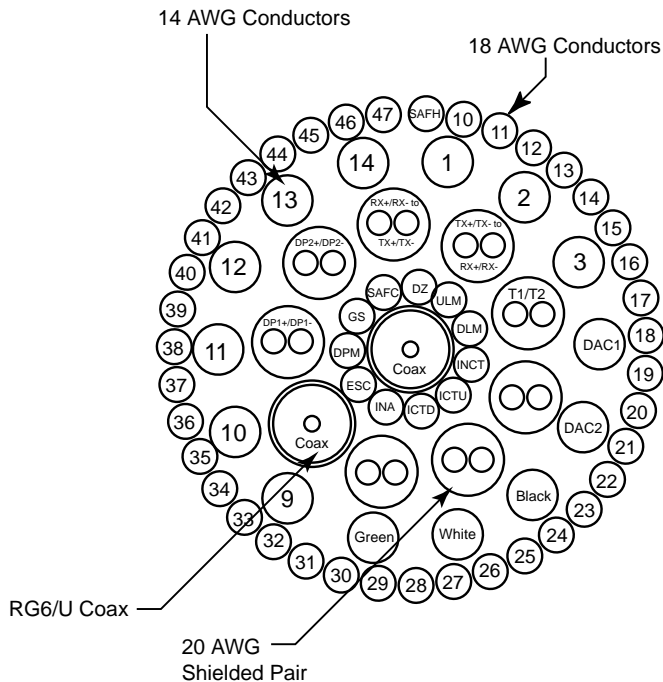
44-03-0026 iControl Large Hoistway Cable

Diameter: 1.32 inches (33.5mm)
 Net weight: 936 lbs/1000 ft (12ff kg/km)

Conductors: Stranded bare soft drawn copper.

Binder: Helically wound synthetic string provides maximum strength.

Shielded Pairs: 2 twisted 20 AWG conductors, copper braid shield, PVC jacket.



Spares and Replacement Parts

Tricon Traveling Cable 44-03-0029

Support Strand: 5/32 inch (4 mm)
 Breaking Strength: 2800 lbs (1270 kg)

Overall Diameter: 1.37 inches (35 mm)
 Cable Net Weight: 945 lbs/1000 ft (1407 kg/km)

Conductors: Stranded bare soft drawn copper.

Insulation: 60 degrees C, 300 volt rated.

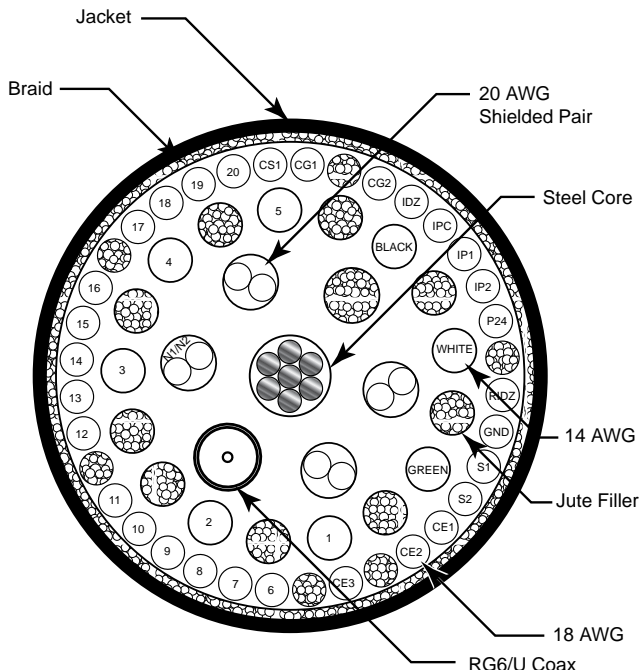
Coax: RG6/U, 75-ohm, UL, sweep tested. Nominal attenuation, 0.4dB/100' @4MHz.

Shielded Pairs: 2 twisted 20 AWG conductors, copper braid shield, PVC jacket.

Steel Support: Preformed, flexible, zinc coated, steel, wire rope. PVC insulated, rayon braid.

Braid: Rayon, 95% coverage of the core.

Jacket: 60 degree C PVC with wear-resistant surface. Retards flame, inhibits oxidation, resists effects of sunlight, water, oil, weathering effects, most solvents and chemicals.



Integration and Networking

Line Drivers, Adapters, Hubs, Modems

Part #	Description
11-03-0003	Line driver female w/LCD RS232
11-03-0004	Line driver male w/LCD RS232
24-03-0001	56K external modem *
24-03-0036	Ethernet switch, 8-port
ADPT-9P-RJ11	Cable Adaptor
EMUL-ESPRIT-KIT	Terminal Emulator kit
EMUL-ADDS260LF-KIT	Terminal Emulator kit



Note: Older modems cannot be directly replaced with 56K modems unless the controller is modified to work with a modem of this speed.

CMS

Part#	Description
24-03-0003	56K internal modem, V.92 *



Note: Older modems cannot be directly replaced with 56K modems on software versions 3.11 or older.

MSD

Part #	Description
24-10-0016	Serial port extender card

Spares and Replacement Parts

Alphabetical Parts List

Part Number	Description
11-02-0033	Sensor Head, Motion 4000 ELGO
11-03-0003	Line Driver with LCD RS232 Female
11-03-0004	Line Driver with LCD RS232 Male
11-04-PRTE	Sandwich Board Pair, Tach Error
11-10-0002-B	Regular tape
11-20-0100	Tape Guide
11-22-0006	CE Fixture Interface Board
11-22-0007	E-Motive Fixture Interface Board
11-22-0008	CE Driver Board
11-22-0010	CE Fixture Interface Board, Hi
17-02-0032	Fuse 500VAC 250AMP Semiconductor
21-80-0007	Flash SIMM Module 32MB 3.3V
24-03-0001	Modem 56K External
24-03-0003	Modem 56K Internal V.92
24-03-0036	Ethernet switch, 8-port
24-04-0025	iView/iCue PC
24-10-0016	Serial Port Extender 8 Port
24-20-0052	Network Interface Card for PC
26-95-0012	Echelon Module TP/XF-78
27-01-0001	Relay Power,A77,DP Contactor, 2NO
27-01-0024	Relay, 4 Form C,PM17AY-120VAC
27-01-0026	Relay, 4 Form C,PM17AY-240VAC
27-01-0027	Relay, 2 Form C,PRD11AYO,MOM/H
27-01-0055	Relay 4 Form C 3A 24VDC Socket Mt
27-03-0004	Relay, 4 Form C, HC4-AC115, with LED
27-05-0001	Relay, 2 Form C,PRD11AHO-120V,MBO
30-01-0001	Power Supply 5V 3AMP
30-01-0013	24VDC Power Supply
30-02-0001	Power Supply TRI Output 5V6A/12V1A
30-05-0004	Battery Pack, TAPS
30-05-0023	Battery, TAPS
30-95-0002	5V, 6A Power Supply, Tricon
30-95-0007	24 VDC Power Supply
31-01-0008	Resistor 1/4W 220 OHM 5%
33-01-0008	Diode, Zener, 10V, 1N4740A
33-01-0025	Diode BR/SCR 36A 1600 VHF36
33-03-0011	SCR/SCR 162 AMP 1600V
33-03-0014	Diode/Diode 105AMP 1500V
33-03-0021	SCR/SCR 330 AMP 1200V
33-05-0002-A	Triac 33-05-0002 with Cut Leads
33-05-0005-A	Triac 8 800V MAC228A10 with Cut Leads
33-08-0012	IGBT 24AMP 600V with Diode
33-08-0013	IGBT 50AMP 1200V Discrete Tran
33-20-0006	Inductive Proximity Sensor 4mm, 5mm cable
33-20-0007	Inductive Proximity Sensor, 15mm, 5mm cable
35-04-0037	Contactora, Surge Suppressor, TAPS 6kVA-240
35-04-0038	Interlock Adapter for 35-95-0006, TAPS 6kVA-240
35-12-0001	Contactora,100AMP,120VAC,1NO
35-12-K09-24D	Contactora, ATL 6.8A, 24 VDC
35-12-0010	Aux Contactora, Side Mt, 1NO, 1NC, TAPS 3kVA & 6kVA-480
35-12-0209	Contactora, Mech Links 10mm, TAPS 3kVA & 6kVA-480
35-95-0006	Interlock, 3RA1954-2A, TAPS 6kVA-240
35-95-0014	Interlock, 50/65/80/95A, TAPS 3kVA & 6kVA-480
35-95-0037	Contactora, ATL 50/60/125/150HP, TAPS 6kVA-240

Alphabetical Parts List

35-95-0050	Contact, Surge Suppressor, TAPS 3kVA & 6kVA-480
35-95-0147	Contact, ATL 15/20/40/50HP, Siemens, TAPS 3kVA
37-01-0020	Barrier TB 24 Position
40-10-0003	Tape
40-10-0004	Stainless steel tape
40-11-0001	6" magnet
40-11-0007	2.5" magnet
40-11-0008	5" magnet
40-11-0009	7.5" magnet
40-11-0010	10" magnet
40-13-0008	Magnetic Tape, Motion 4000 ELGO
40-14-0003	6" magnet
40-14-0002	3" magnet
40-14-0020	1.5" magnet
40-14-0019	Landing zone magnet, iLand
40-25-0015	Column 14" Long Landing System Pedestal
40-25-0018	Column 20" Long Landing System Pedestal
44-03-0024	iControl Traveler Cable, Large
44-03-0025	iControl Traveler Cable, Small
44-03-0026	iControl Hoistway Cable, Large
44-03-0027	iControl Hoistway Cable, Small
44-03-0029	Tricon Traveler Cable
45-95-0101	N Pole Magnetic Tape, 6-inches
45-95-0102	S Pole Magnetic Tape, 6-inches
60-52-0008	BNC to RCA (plug) adapter
60-52-0009	BNC to discrete wires adapter (Balun)
60-52-0010	Video LCD
60-52-0012	Switch Panel
ACBU-L50	Brake Unit 230VAC 50AMP Rev 2
ADPT-9P-RJ11	D-Sub 9PIN Male TO RJ11 Adaptor
C-95-0078	Cable M/F DB 15-pin, 8 ft.
C-COMM-9P-F-HCDA	Serial Hall Call, Ribbon to 9-pin D Cable
C-ETHERNET-BLU-5	Ethernet Cable, 5 ft. blue
C-ETHERNET-BLU-10	Ethernet Cable, 10 ft. blue
C-ETHERNET-BLU-50	Ethernet Cable, 50 ft. blue
C-ETHERNET-ORG-5	Ethernet Cable, 5 ft. orange
C-ETHERNET-ORG-10	Ethernet Cable, 10 ft. orange
C-ETHERNET-ORG-50	Ethernet Cable, 50 ft. orange
C-HB/QSB-6 / -12	Cable, header board to sensor board (6 or 12 inch)
C-RJ11-CAN-xx	Cable, Car Panel to Car Top Box (xx = length inches)
C-RJ12-xx	Cable, CAN Hub to Board (xx = length inches)
DS32-LGAR2	Drive 12-Pulse 325A LGA-R2 DS
DSH18-S	Drive 12-Pulse 180A HV
DSL18-S	Drive 12-Pulse 180A LV
EC-MCB	A Processor Board, Motion 3000 ES
EC-SCB	B Processor Board, Motion 3000 ES
EC-DISP	Display Board, Motion 3000 ES
EC-INSP-BOX	Inspection Control & Cable, Motion 3000 ES
EC-ADJ-PNL	LED Adjustment Panel
EC-ADJ-LCD	LCD Adjustment Panel
EMUL-ESPRIT-KIT	Emulator Esprit kit for field replacement
EMUL-ADDS260LF-KIT	Emulator kit
HC-ACI	AC Drive Interface Board
HC-ACI-D	Interface Board for Series M DC

Spares and Replacement Parts

HC-ACIF	AC Drive Interface with Flux Vector
HC-BI	Buffer Input f/HC-DO-Drive SmarTRAQ
HC-CCDB	MOM/MOH Door Board for Cartop
HC-CDB-HI	Driver Board DC-DC-CONV-HI
HC-CHP / -M	CAN Hub and Power Supply Board (-M if iMonitor equipped)
HC-CI/O	Call I/O Board
HC-CI/O-E	Call I/O Board PHC/PTC
HC-CI/O-EL	Call I/O Board PHC/PTC LOWV
HC-CI/O-L	Call I/O Board Low Volt
HC-CI/O-LVHC	Call I/O Board Low Voltage HI Current
HC-CI/O-N	Call I/O Board Neon Lamp
HC-CS	Current Sensor Board LEM-70A
HC-CTL	Control Board
HC-DAB	Duplex Adaptor Board
HC-DB-MOD	MOD Door Board
HC-DB-MOD-R	MOD Rear Door Board
HC-DB-MOM/H	MOM/H Door Board
HC-DB-MOM/HR	MOM/H Rear Door Board Rev 1-1
HC-DB-UI/IPC	MCE Universal Door Board
HC-DCC	DC Control Board, DC-DC-CONV (LOW/HI)
HC-DFLS	DF Landing System Board
HC-DFLS-E	Encoder Interface Board Rev 30
HC-DFLS-Q	DF-QUIK Landing System Board Rev 3-0
HC-DFLS-TR	DF Landing System Board Traction
HC-DFQ	DF-QUIK Landing System Board
HC-DFQ-TR	DF-QUIK Landing System Board Traction
HC-DO-DRIVE-R7	SmarTraq Drive Rev 6
HC-DO-DRIVE-MODULE	SmarTraq Drive Rev 6, Replacement Module Set
HC-DPS	Door Power Supply Rev 1-1
HC-DPS-MOM/H	MOM/H Door Board with Power Supply R3-3
HC-DPS-MOM/HR	MOM/H RR Door Board with Power Supply R3-3
HC-DVR	Driver Board, Motion 2000
HC-DYNA	Interface Board Dynalift Rev 1-1
HC-EI-05B15	Encoder Interface 5VENC 15VDR
HC-EI-15B05	Encoder Interface 15VENC 5VDR RV1-1
HC-ENCS-12V	Encoder Interface 12V F/SCR Performa R 1
HC-EQ2	Earthquake 2 Board
HC-ETS	Overspeed Detect Board Rev 1-2
HC-ETS-I	ETS/INSP LEV Overspeed Board Rev 1-2
HC-FS2	Fire Phase I ANSI '89
HC-GB	Gong Board with 2 Relays
HC-GB-4	Gong Board with 4 Relays
HC-HBF	Doorlock Bypass Front ASME
HC-HBFR	Doorlock Bypass Front/Rear ASME
HC-I4O	I/O Expander 16IN/4OUT
HC-IOX	I/O Expander Board
HC-IOX-L	8 I/O & Load Weighing
HC-IPLS	IP Landing System Board
HC-IPLS-TR	IP Landing System Board A17 Traction
HC-LB-BF	Lock Bypass with FD & RG Rev 3-5
HC-LC-L	Load Weigh Xfrmation Board Rev 2-0
HC-LSQ	LSQ Landing System Board Rev 0-0
HC-LSQ-P	Encoder Interface Power Supply Rv 0-0
HC-LWIP	Load Weigher Board, Isolated Platform
HC-LWIPA	Load Weigher Isolated Platform Box Assy
HC-MPU / -M	Main Processor Board (-M if iMonitor Ethernet connection)
HC-OA-120-12	Output Adaptor Board 120V 12 POS

HC-OA-120-16	Output Adaptor Board 120V 16 POS
HC-OA-24-12	Output Adaptor Board 24V 12
HC-OA-24-16	Output Adaptor Board 24V 16
HC-OA-48-12	Output Adaptor Board 48V 12
HC-OA-48-16	Output Adaptor Board 48V 16
HC-PCIO	Power Call I/O Board
HC-PCIO-L	Power Call I/O Board LOW V
HC-PCIO-LVHC	Power Call I/O Board LV HC
HC-PI/O	Power Input/Output Board
HC-PIX	PI Expander Board 8-POS
HC-PIX-16	PI Expander Board 16-POS
HC-RB-1	Hydro Relay Board ATL Rev 01
HC-RB-1SP	Relay Board 1 Speed AC Rev 01
HC-RB-1YD	Hydro Relay Board WYE DELTA Rv 01
HC-RB-2	Traction Relay Board
HC-RB-2SP	Relay Board 2 Speed AC
HC-RB4	Traction Relay Board
HC-RB4-2SP	Traction Relay Board 2Spd
HC-RB4-SCR	Traction SCR Relay Board
HC-RB4-SCRI	Traction IMC SCR Relay Board
HC-RB4-VFAC	VFAC Relay Board
HC-RB-ALI	Relay Board for ALIMAK
HC-RB-DYNA	Relay Board for DYNALIFT
HC-RBH	Hydro Relay Board
HC-RBH-C	Hydro Relay Board
HC-RB-SCR	Relay Board for SCR
HC-RB-VFAC	Relay Board Variable Freq AC Rev 02
HC-RD	Logic Rear Door Board
HC-RDR	Rear Door Board
HC-RDRB-D	Rear Door Relay Board-Depend
HC-RDRB-I	Rear Door Relay Board-Independ R0-0
HC-RPSDB	MOM/MOH Door Board Power Supply
HC-RST	SCR Auto Reset Board Rev 0-0
HC-RT	Relay Tester Board Rev 1-1
HC-RT10	Resistor Termination Board w/Ten 15K Res
HC-RT20	Resistor Termination Board w/Twenty 15K Res
HC-RT20-A	Resistor termination Board for NYTA
HC-RTF	Regen Transistor Failure Rv 0-0
HC-SB1	Sensor Board for LS-QUAD-2
HC-SCR	SCR Interface Board for Pattern Generator
HC-SCR-GPG	SCR Interface Board for GPG
HC-SIB	Selectable Input Board
HC-SRT-H240	240 Volt SR Timer Board
HC-SRT-L120	120 Volt SR Timer Board
HC-TAB-2	Tract Adaptor Board
HC-TAB-DF	Tract Adaptor Board/DIST.FB
HC-TAB-INT	Tract Adaptor Board with INT SPD
HC-TACH-MG	Tach Adjust Board VVMC-MG Controller
HC-TACH-SCR	Tach Adjust Board for VVMC-SCR Cntrlr
HC-UI-NP-2	HC-UI-NP W/20 Pin Conn Rev 0-1
HC-UIO	Universal I/O Board
HC-UIP	Universal Input Power Bd Rev 1-1
i-BOX-1	iBox Main Processing System
i-BOX-1-MI	iBox, No DL Bypass
ICE-COP	Serial Car Operating Panel Board
ICE-CTP	PCBA ICE Cartop Board Assy
ICE-EB	Emergency Brake Board

Spares and Replacement Parts

ICE-IEQ	PCBA ICE Earthquake Board
ICE-IRB	Relay Board
ICE-IRD	iControl Rear Door Board
ICE-FLASH-32MB	Flash card, 32 MB
ICE-MIAC	PCBA ICE Main Process AC Input-16IN
ICE-MOR	PCBA ICE Main Processor Relay Board assy
ICE-RG	ICE Rope Gripper for ICE-RG
ICE-SAF	Safety Processor Board
ICE-SF-CE	CE Serial Fixture Interface Board
ICE-SF-EM	E-Motive Serial Fixture Interface Board
ICE-SRAM-2MB	Static RAM, 2MB
IFIELD-MODULE-F	ICE Field Module Assembly
I-LAND-1-C	iLand compact assembly
I-LAND-1	iLand assembly
LS-TAPEMNTBOT-ELGO	Tape mount, bottom
LS-TAPEMNTTOP-ELGO	Tape mount, top
IMC-ACIB	IMC AC Interface for Baldor
IMC-ACIK	IMC-AC TorqMax (Keb) Drive I/F Board
IMC-ACIM	IMC-AC Magnetek Drive I/F Board
IMC-DAS	Data Acquisition Board, Encoder Application
IMC-DAS-EASI	Data Acq & Encoder Adaptor Assembly
IMC-DAS-MG	Data Acq Sys Board F/MG Rev 6B
IMC-DCP	PCBA IMC-Digital Control Processor
IMC-DDP	Int Motor Cont Drive Rev 11
IMC-DDP-C	Int Motor Cont with FP 1WS
IMC-DDP-D	PCBA Performa DDP FP 1WS 8K EEPROM
IMC-DIO	Digital I/O Board
IMC-G233H	IMC-DRV Gen 25ABF 30AMF,35AGF
IMC-GI2	IMC-DRV Gen/Int Brake/25A
IMC-GIO	In Mot Cont General I/O
IMC-GPA-I	IMC Gen Power Interface
IMC-GPA-IH	IMC Gen Power IF HI-CUR Rv 2-1
IMC-GPA-SI	SCR Gen Power Interface Rev 2-3
IMC-PRI	IMC Power Relay Interface Board
IMC-PRI-ENH	IMC Power Enhanced Interface Board
IMC-RI	Relay Interface Board Rev 3-5
IMC-SPI	SCR Power Interface Board
INET-RLY-2K	Relay Board, 2K Compliant
INET-RG-2K	Rope Gripper Board, 2K Compliant
LS-HB-F	iLand Header Board
LS-HSB-F	iLand Header Board
LS-MRDF	Machine Room Distance Feedback Board, iLand Slide
LS-PEDESTAL-BSE	Landing System Pedestal Kit
LS-PSB	Landing System Proximity Board, iLand Slide
LS-PS1	Mag Prox Switch (LS-QUAD-2)
LS-PS2	Mag Prox Switch (LS-QUITE)
LSQK2-ENCDR	LS-QUIK Encoder with Flat Base
LSQK2-ENCDR-100	LS-QUIK Encoder with Flat Base 100PPR
LS-QSB	Quadrature Sensor Board
LS-STAN5-SG-R-ASSY	Cartop Leveling Assembly, iLand Slide
LS-T-SET9000-CB	Control Board
LS-T-SET9000-HM	Head mounting kit
LS-T-SET9000-MC	Channels kit
LS-T-SET9000-TC	Tape Clamp
LS-READERMNT-ELGO	Elgo sensor mounting hardware
LS-TAPEADPTR-ELGO	Mounting adapter kit for 8# rail

Alphabetical Parts List

LS-TAPEMNTBOT-ELGO	Bottom mounting arm/hardware kit, Elgo
LS-TAPEMNTTOP-ELGO	Top mounting arm/hardware kit, Elgo
LW-SA-1	Load Weigher Sensor Assembly
LW4202	K-Tech Load Weigher Unit
MC-ACFA	AC Feedback Analog Board Rev 1-7
MC-ACFA-DF	AC Feedback ALG/DF Rev 1-7
MC-ACFA-FV	AC Feedback ALG/FV Rev 1-7
MC-ACFA-FVDF	AC Feedback ALG/FVDF Rev 1-7
MC-ACFA-OL	AC Feedback ALG BD/OPEN LP Rev 1-7
MC-ACFR	AC Feedback Relay Board
MC-ARS	AUX. RS-232 Interface Board Rev 0-2
MC-CGP	PCBA Comm Proc Board 0 Ports
MC-CGP-4	PCBA Comm Proc Board 4 Ports
MC-CGP-8	PCBA Comm Proc Board 8 Ports
MC-CPI	Car Panel Interface Board
MC-CP-1	Comm Proc Board Rev 5A
MC-CP-1A	Comm Proc Board (MRS/ARS) Rev 5-6
MC-CP-1S	Comm Proc Board SWAG LI Rev 5A
MC-CP-232	Comm Proc Board (RS232) Rev 5A
MC-CP-232A	Comm Proc Board (MRS/ARS) Rev 5-5
MC-CP-232S	Comm Proc Board (RS232) SWAG Rev 5A
MC-CPA-1S	CP ADV 1Serial Sync
MC-CPA-1SL	CP ADV 1 Serial Sync Local
MC-CPA-4S	CP ADV 4 Serial Sync
MC-CP-G	Comm Proc Board (Group) Rev 5A
MC-CP-GAS	Comm Proc (G/MRSARS) SWAG Rev 5-6
MC-CP-GM3	Comm Proc (MC-DP) M3 Rev 5-3
MC-CP-GM3A	Comm Proc (MC-DP/ARS) Rev 5-3
MC-CP-GS	Comm Proc (Group) SWAGE Rev 5A
MC-CSB	Comp Switch Board Rev 1-1
MC-LSI	Landing System Interface Board
MC-MP-1E	Main Microprocessor with Enhanced Diag
MC-MP-1ES	Main Microprocessor with Enhanced Diag
MC-MP2	PCBA Main Processor-Advanced
MC-MP2-2K	Main Processor Advanced A17.1-00/B44-00
MC-MRS-1	MINI RS-232/422 PCBA Rev 2-3
MC-NC	PCBA Neuron Serial Comm
MC-NC-BSE	PCBA Neuron Serial Comm Base
MC-NIO-T	PCBA Neuron Serial In/Output Tested
MC-NIO-X	PCBA Neuron Serial In/Output Extended
MC-PA	Peripheral Adaptor Board 2 Port
MC-PA-1	Peripheral Adaptor Board 4 Port
MC-PA-2K	Peripheral Adapt Board 2 Port A17.1-00/B44-00
MC-PC-1	Prog Control Basic Board Rev 44
MC-PCA-0A	PC Adv Oser Async, ISBX
MC-PCA-0A2K	PC Adv Programmable A17.1-11/B44-00
MC-PCA-0A3	PCBA Adv 0Ser Async ISBX Fast Processor
MC-PCA-0AR	PC Adv 0ser, Async, RBN
MC-PG	Pattern Generator Board Rev 1-4
MC-PGAS	Pattern Generator I/O LI REV2
MC-PGSAF	Pattern Generator Safety Proc Board
MC-RS	RS-232/422 Board
MOTOR4150-B1	Motor Assembly For Motor 4150 and Base B1
MOTOR4150-B3	Motor Assembly For Motor 4150 and Base B3
MOTOR4151-B1	Motor Assembly For Motor 4151 and Base B1
MOTOR4151-F	Motor Assembly For Motor 4151 and Flange
MOTOR4152-B2	Motor Assembly For Motor 4152 and Base B2

Spares and Replacement Parts

MOTOR4157-F	Motor Assembly For Motor 4157 and Flange
OT-M00098	MPU Board, IntellaNet
OT-M00173	Fuse Board
OT-M00210	Leveling Unit Encoder Board
OT-M00233	Leveling Unit Pretorque Board
OT-M00237	8-Channel I/O Expansion Board
OT-M00267	ETSL Board
OT-M00297	Leveling Unit Emitter/Detector Board
OT-M00299	48-Channel Hall Station Board
OT-M00331	Hall Station Expansion Board
OT-M00367	ETSL Board
OT-M00373	Lantern Card, HD with 4-pole Relay
OT-M00393	CAN I/F for CE Driver
OT-M00396	Relay Board with CAN Interface
OT-M00397	Display Board
OT-M00398	MPU Board
OT-M00399	16-Channel CAN I/F I/O Expansion Board
OT-M00421	Gripper Bypass Board, Rev 0.2
P4-VANE-12#	Vane assembly, 8/11/12# rail
P4-VANE-15#	Vane assembly, 15/18-1/2# rail
P4-VANE-30#	Vane assembly, 22-1/2/30# rail
P4-VANE-3	3" vane and mounting hardware
PEN-VANE-12#	Proximity encoder vane assembly, 12# rail
PEN-VANE-15#	Proximity encoder vane assembly, 15# rail
PEN-VANE-30#	Proximity encoder vane assembly, 30# rail
RCNTWK	RC Network 0.1MF & 47 OHM
RDNTWK	0.5 Resistor/Diode Network
SC-3HN	Serial Hall Call Node Board
SC-BAH	Bypass/Access Board For Hydro
SC-BAHR	Bypass/Access Rear Board For Hydro
SC-BAHR-SR33	Bypass/Access Rear Board Hydro with SP Rly 33
SC-BAHR-SR42	Bypass/Access/Rear Board Hydro with SP Rly 42
SC-BAH-SR33	Bypass/Access Board For Hydro with SP Rly 33
SC-BAH-SR42	Bypass/Access Board For Hydro with SP Rly 42
SC-BASE	Bypass/Access/Overspeed/Emer Brake F/Non DF
SC-BASE-D	Bypass/Access/Overspeed/Emer Brake F/DF
SC-BASER	Bypass/Access/Overspeed Rear for non DF
SC-BASER-D	Bypass/Access/Overspeed Rear DR BD F/DF
SC-HCC	Serial Comm Hall Call Cntrl (Obsolete)
SC-HCC-48	Serial Comm Hall Call Cntrl 48Flr & Below
SC-HCD	Serial Comm Hall Call Driver
SC-HCDA	SC Hall Call Driver Assembly
SC-HCE-EM	Serial Comm Hall Call ENE with Digi EM
SC-HCN	Serial Comm Hall Call Node (Obsolete)
SC-HCN-48	Serial Comm Hall Call Node 48Flrs & Below
SC-HCN-98	Serial Comm Hall Call Node 49Flrs & Above
SC-HCN-A48	Serial Com Hall Call Node with Com 48Flr Below
SC-HCNT-KIT	SmartLINK Serial Hall Call Kit
SC-HCONN-KT	Serial Hall Call Connect Kit Tap/Loop
SC-HDIO	High Density I/O, A17.1-2000
SC-ION	I/O Discrete to Serial Converter Board
SCR-CA	Contactorm Assembly Board Rv 0-1
SCR-CC-H	Commutate Cap Board HIGHV Rev 1-1
SCR-CC-L	Commutate Cap Board LOWV Rev 1-1
SCR-DS	Driver/Snubber High Voltage

Alphabetical Parts List

SCR-DS-HI	Driver/Snubber High Current
SC-REPEATER	Bus Repeater Board
SC-REPEATER-CC	Use the SC-Repeater-CC-T
SCR-LGA	PCBA IMC-SRC Advanced Logic
SCR-LGD	SCR Logic Display Board
SCR-PRC	RC Network F/SCR-PRI Rev 1-1
SCR-PRC-H	RC Network F/SCR-PRI with Hdw Rv 1-1
SCR-PRI	SCR Power Relay Interface Board
SCR-PRI-EE	SCR Power Relay Embedded/Enhanced
SCR-PRI-EE-A	SCR Power Relay Interface Bd Australia
SCR-PRI-ENH	SCR Power Relay Enhanced Interface Board
SCR-PS	Power Supply Board Rev 1-2
SCR-RI	SCR Relay Interface Board Rev 1-3
SCR-RIX	SCR Relay Interface Board PERFORMA
SCR-SN	Snubber High V Board Rev 2-0
SC-SB2K	Relay Board Main A17.1 Traction
SC-SB2K-H	Relay Board Main A17.1 Hydro
SP-CGP4	Swing Panel 4 Port 232
SP-CGP4-2K	Swing Panel 4 Port A17.1-00/B44-00
SP-CGP4-MP2	Swing Panel 4 Port 232 with MP2
SP-DF	Swing Panel/Distance Feedback
SP-EHLOC	Swing Panel/Enhanced/Local/MCE
SP-EHLOC-1S	Swing Panel/Enh/Local/MCE/ with MC-CPA-1S
SP-EHLOC-4S	Swing Panel/ENH/Local/MCE with MC-CPA-4S
SP-GPM3-CGP4	Swing Panel/M3 Group/MCE
SP-GPM3-CGP4-MP2	Swing Panel M3 Group 4 Port with MP2
SP-GPM3-CGP8	Swing Panel/M3 Group/MCE
SP-GROUP-M3	Swing Panel/M3 Group/MCE
SP-IMC-AC	Swing Panel IMC-AC
SP-IMC-CGP4	Swing Panel IMC Car 4 Port 232
SP-IMC-CGP4-2K	Swing Panel IMC Car 4 Port A17.1-00/B44-00
SP-IMC-CGP4-MP2	Swing Panel IMC Car 4 Port 232 with MP2
SP-IMC-CGP8	Swing Panel IMC Car 8 Port 232
SP-IMC-S	Swing Panel IMC-SCR
SP-IMC-S-2K	Swing Panel IMC-MG A17.1-00/B44-00
SP-LOCAL	Swing Panel/Local/MCE
TAPS-VF	Control Board, TAPS
TRICON-HHU	Tricon Hand Held Unit
TRICON-HHU-NYCH	Tricon Hand Held Unit NYCHA
T-ACC	Access Board
T-BMS	BMS Interface Board
T-CEMC	CE Driver Board, Heavy Duty
T-CPU	CPU Board
T-DIODE-INT	Relay to Limit Board Diode
T-GATEWAY	Gateway Board
T-IO24D	I/O 24 Board
T-Limit	Limit Board, non 2K Tricon
T-Limit-2K	Limit Board, 2K Tricon
T-LON-FILTER	Filter Board for IO24D
T-MOD	MOD Door Operator Interface Board, Tricon
T-MOM	MOM Door Operator Interface Board, Tricon
T-PW5	PW5 Serial Interconnect Board
T-RB4-HS	Relay Board
T-RBH-HS	Relay Board, NYCHA
T-TB4-SAF	Relay Board with Safety Relays
T-TERM-F	F Terminal Board
T-TERM-L	L Terminal Board

Spares and Replacement Parts

T-TERM-O	O Terminal Board
TAPE-MT-ELGO	Elgo mounting kit, includes top arm/bottom arm/sensor mount kits
TC-MPI	Motion Processor Board, Motion 4000
TLS-1	Hoistway switch, TLS
TLS-2	Cartop switch, TLS
TLSC-4-SW-MOD	4 magnetic limit switch module
TLS-C-12	12 switch, cartop limit switch
TLS-C-16	16 switch, cartop limit switch
VS-1A-H	Prox Switch with Hardware Field Repla
VS-1L	Proximity Switch LS-QUIK
VVC-1-PG	Drive Pattern Generator Rev 3
VVC-2-G	Drive/Geared/Gearless (Tach FB)

IntellaNet or Tricon
Call 718 417 3131